



Medium Chess Puzzle # 0089

By

G Bud Games
<https://gbud.in>

December 10, 2021

Contents

Medium Chess puzzle # 0089 - Mate in 2 moves	3
Medium chess puzzle 0089	3
Solution to medium chess puzzle 0089	4
Solution 1	4
Right moves for the solution to the medium chess puzzle 0089	6
Explanation for the moves	6
Categories of medium chess puzzle 0089	6
medium chess puzzle 0089 chart	7
How to view the solution to medium chess puzzle 0089	9
How to get help for moves in the medium chess puzzle 0089	10
Play chess for free	11

List of Figures

1	Solve this medium chess puzzle 0089. Mate in 2 moves @ https://gbud.in/gr2v682	3
2	Solve this medium chess puzzle online with solution @ https://gbud.in/gr2v682	3
3	Initial board position of medium chess puzzle 0089	4
4	Rxc7+ - This is a double discovered check since the movement of the rook results in check from itself and bishop.	5
5	Kg8 - Opponent's king is forced to respond.	5
6	Ra8# - Your next rook moves to eighth rank and checkmate. This is called ladder mate.. This is how you can mate in 2 moves.	6
7	medium chess puzzle 89 chart 1	7
8	medium chess puzzle 89 chart 2	8
9	medium chess puzzle 89 chart 3	8
10	medium chess puzzle 89 chart 4	9
11	Click the solution button to view solutions @ https://gbud.in/gr2v682	9
12	Click the help button to get help on next move @ https://gbud.in/gr2v682	10
13	Solve more medium puzzles @ https://gbud.in/chsmdpz	10
14	Solve other puzzles @ https://gbud.in/chsgppz	10
15	Play chess online for free. Solve puzzles and play with friends	11
16	Solve this puzzle online by scanning this QR code or go to the link below	12

Medium Chess puzzle # 0089 - Mate in 2 moves

Solve this medium chess puzzle and improve your chess games through improvement of your chess strategies and chess tactics.

Puzzle No : 0089

Difficulty level : medium

Description : Mate in 2 moves

Next Move : White

Player level : Intermediate

Short URL for puzzle : <https://gbud.in/gr2v682>

Medium chess puzzle 0089

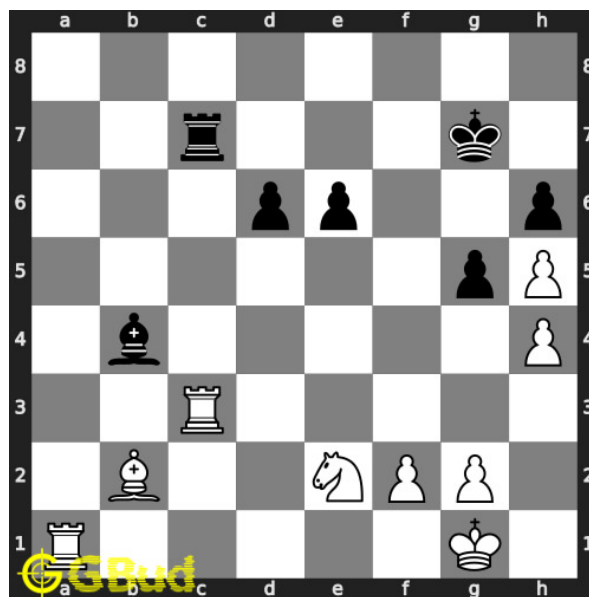


Figure 1: Solve this medium chess puzzle 0089. Mate in 2 moves @ <https://gbud.in/gr2v682>



Figure 2: Solve this medium chess puzzle online with solution @ <https://gbud.in/gr2v682>

Dont forget to check out [chess puzzles](#), [easy chess puzzles](#), [medium chess puzzles](#), [hard chess puzzles](#) and [chess puzzles collections](#) .

Solution to medium chess puzzle 0089

At this puzzle, next [move](#) is by [White](#). The objective of the puzzle is to mate in 2 moves.

See the interactive solution at the [puzzle page](#)

Solution 1

Initial board position This is the initial board position of medium chess puzzle 0089.

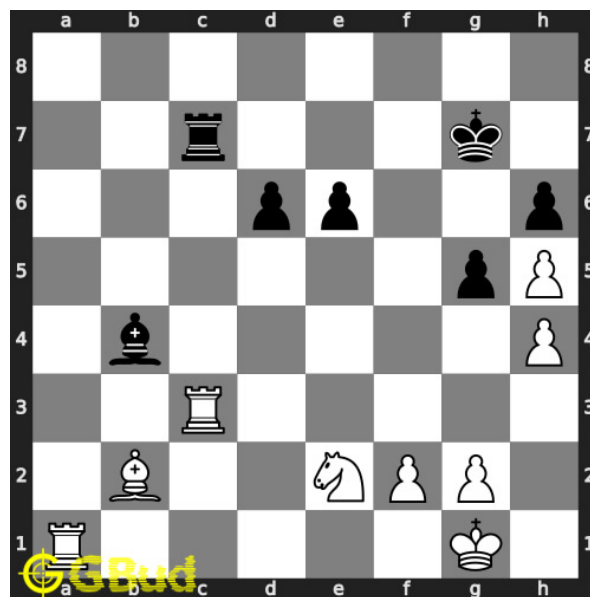


Figure 3: Initial board position of medium chess puzzle 0089

Move 1 Move by white

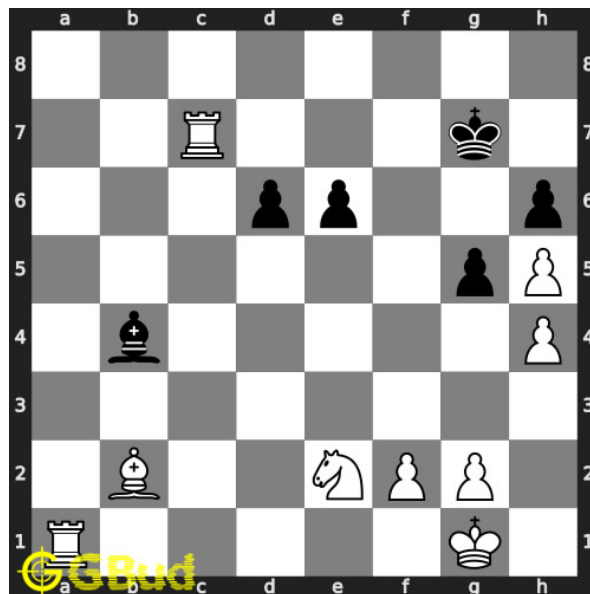


Figure 4: Rxc7+ - This is a double discovered check since the movement of the rook results in check from itself and bishop.

Move 2 Move by black

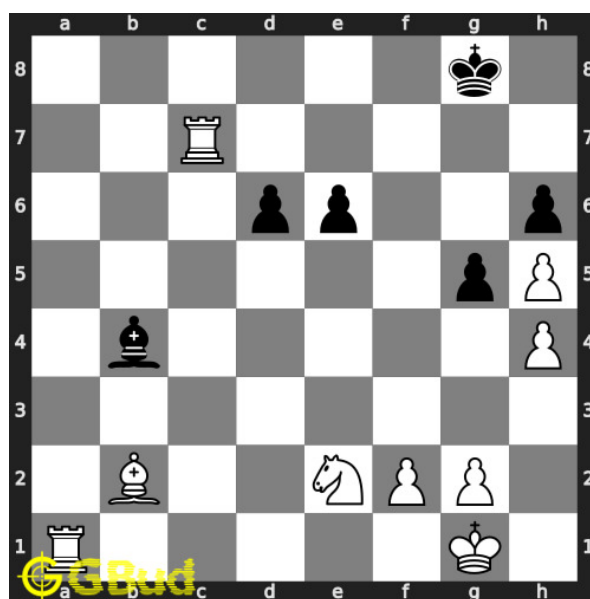


Figure 5: Kg8 - Opponent's king is forced to respond.

Move 3 Move by white

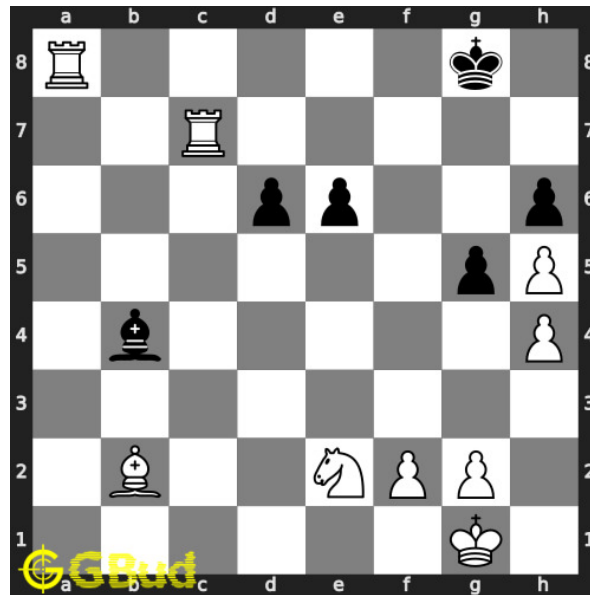


Figure 6: Ra8# - Your next rook moves to eighth rank and checkmate. This is called ladder mate.. This is how you can mate in 2 moves.

Right moves for the solution to the medium chess puzzle 0089

Based on the objective of the puzzle, you have to make the right moves. Following are the right moves

1. Rxc7+, Ra8#

Explanation for the moves

1. Rxc7+ - This is a double discovered check since the movement of the rook results in check from itself and bishop.
2. Kg8 - Opponent's king is forced to respond.
3. Ra8# - Your next rook moves to eighth rank and checkmate. This is called ladder mate.. This is how you can mate in 2 moves.
4. For right move - You have had a wise discovered attack followed by ladder mate. Keep learning new strategies
5. For wrong move - You could have had a ladder mate. Do not stop trying

Categories of medium chess puzzle 0089

This medium chess puzzle falls in these categories.

1. [Medium chess puzzles](#)

2. Mate in 2 puzzles in chess
3. Endgame puzzles in chess
4. Battery puzzles in chess
5. Strategy puzzles in chess
6. Mate pattern puzzles in chess
7. Rook puzzles in chess

medium chess puzzle 0089 chart



Figure 7: medium chess puzzle 89 chart 1



Figure 8: medium chess puzzle 89 chart 2



Figure 9: medium chess puzzle 89 chart 3



Figure 10: medium chess puzzle 89 chart 4

How to view the solution to medium chess puzzle 0089

To view the [solution to this puzzle](#), follow the steps given below

1. Go to the [puzzle page](#)
2. Click the solution button (Key as shown [below](#)) to view the solution



Figure 11: Click the solution button to view solutions @ <https://gbud.in/gr2v682>

How to get help for moves in the medium chess puzzle 0089

To get help or the possible next moves in the puzzle, , follow the steps given below

1. Go to the [puzzle page](#)
2. Click the help button (exclamation mark as shown [below](#)) to get help or suggestion on next possible [move](#)



Figure 12: Click the help button to get help on next move @ <https://gbud.in/gr2v682>



Figure 13: Solve more medium puzzles @ <https://gbud.in/chsmdpz>



Figure 14: Solve other puzzles @ <https://gbud.in/chsgppz>

Play chess for free

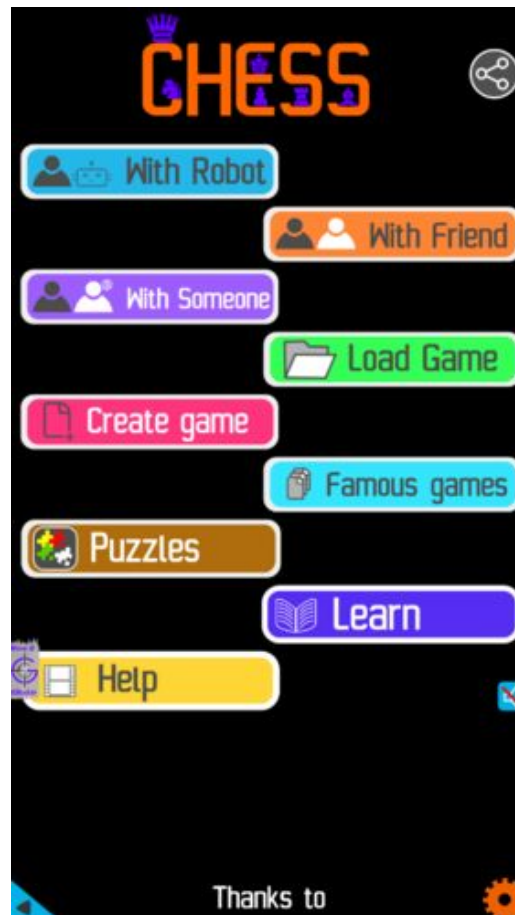


Figure 15: Play chess online for free. Solve puzzles and play with friends

Play chess for free at <https://gbud.in/chs>

We present you a platform to play chess online with friends for free. No need to install any app. You can play chess for free without registration or login.

Simple. You can do several chess related activities.

1. [solve chess puzzles](#)
2. [learn about chess](#)
3. [play chess with computer](#)
4. [play chess with friend](#)
5. [create your own chess games](#)

6. [fen viewer](#)
7. [fen editor](#)
8. [fen generator](#)
9. [pgn viewer](#)
10. [chess board editor](#)
11. [view famous chess games.](#)



Figure 16: Solve this puzzle online by scanning this QR code or go to the link below

<https://gbud.in/gr2v682>

Read the latest article on Medium Chess puzzle # 0089 - Mate in 2 moves by scanning this QR code or click the link

Previous article : [« Medium Chess puzzle # 0088 - Promote your pawn in 2 moves](#)

Next article : [Medium chess puzzles »](#)

[Back to top](#)

[Contact Us](#)